



SK 200

## MONITORING SYSTEMS for Metal Forming Machines

- for cold formers and thread rollers
- Mandonic automatic enveloping system
- Puzzlemaster technique with expert monitoring routines
- up to 8 channels
- 4,3" colour touch screen
- multiple part counters
- very easy to operate
- compact enclosure

## Monitoring Functions

- Mandonic auto enveloping
- SKPuzzlemaster expert monitoring programs for special types of errors and forming operations
- new intelligent auto start feature after stop
- judges process stability and monitoring quality
- absolute force measurement
- Trending stop/go chart
- tool protection (binary sensors)
- part data memory

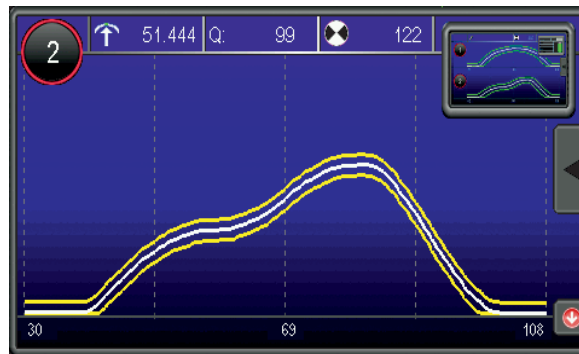
## Technical Features

- 4,3" TFT color touch-screen
- EMR-proof, ergonomically designed flat enclosure, numerous mounting options (yoke, swivel, floor pedestal, panel mount)
- part counters for job size, tool life, unattended production runs with Eco-Stop (unmanned shifts) and SPC inspection intervals
- batching counter (opt.)
- sorting logics

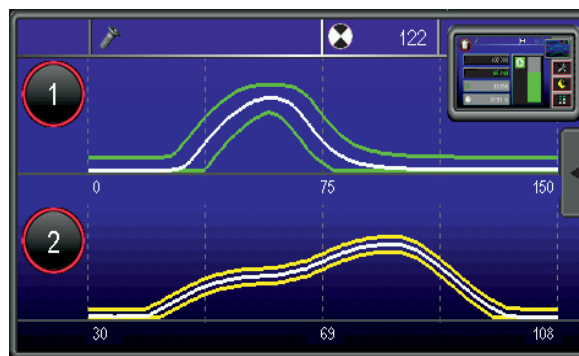
## Technical Data

- powerful digital signal analysis processor
- up to 8 sensor inputs
- 5 digital outputs (incl. 4 relays)
- 5 digital inputs
- crank angle decoder option
- data ports: RS-232, 1 x USB, Teleservice
- RFID controlled user access
- data back up (USB)
- high output digital signal amplifiers
- connector for warning light
- dimensions: 230 W x 165 H x 60 D (mm)
- weight 2,3 kg
- power supply: 24 VDC, 30W

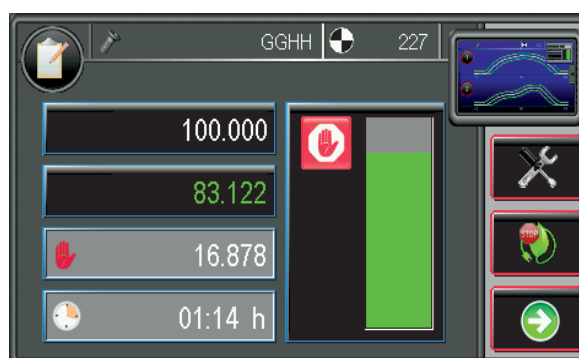
Please note that some features listed above are optional even if not specifically mentioned. Technical modifications are possible without prior notice.



The Mandonic auto enveloping system adjusts the envelope limits perfectly according to the current variation of the process. The result: reliable detection of process errors with virtually no unnecessary machine stops. SKPuzzlemaster is provided for quick activation of expert monitoring routines.



The dual curve display on multi channel applications.



Easy-to-set part counters are available for controlling

- order size
- tool life
- unattended productions runs
- SPC inspection intervals

All counters show preset quantity and current count. Machine stops when preset counts are reached (if activated).