



SK 400

## MONITORING SYSTEMS for Metal Forming Machines

- for cold formers and thread rollers
- Mandonic automatic enveloping system
- Foxmatic monitoring technique
- up to 16 channels
- 7" colour touch screen with Cockpit multi function displays
- Puzzlemaster technique with expert monitoring routines
- Mandon<sup>®</sup> reporting system
- very easy to operate
- user access controllable by RFID key
- ready for production data networking with MES-Software SK-go!
- optional OPC-UA data interface
- prepared for PTO 4.0 to provide full process data documentation

## Monitoring Functions

- Mandonic auto enveloping
- Foxmatic technique with Auto-Drift-Compensation for improved detection of small errors
- SKPuzzlemaster expert monitoring programs for special types of errors and forming operations
- new intelligent auto start feature after stop
- judges process stability and monitoring quality
- DMI Die Match Indicator for thread rollers
- absolute force measurement
- Trending stop/go chart
- tool protection (binary sensors)
- part data memory
- Mandon® reporting system

## Technical Features

- 7" TFT color touch-screen with high resolution
- EMR-proof, ergonomically designed flat enclosure,
- numerous mounting options (yoke, swivel, floor pedestal, panel mount)
- part counters for job size, tool life, unattended production runs with Eco-Stop and SPC intervals
- sorting and batching logics

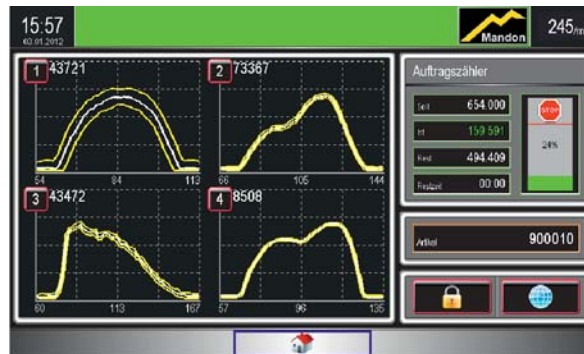
## Ready for 4.0

- integrated data networking with MES SK-go!®
- optional OPC-UA data interface
- prepared for PTO 4.0 process data documentation

## Technical Data

- powerful digital signal analysis processor
- up to 16 sensor inputs
- 5 digital outputs (incl. 4 relays)
- 5 digital inputs
- crank angle decoder option
- data ports: RS-232, Ethernet, USB, Teleservice
- RFID controlled user access
- data back-up (network or USB)
- high output digital signal amplifiers
- multi-colour warning light (optional)
- dimensions: 230 W x 165 H x 60 D (mm)
- weight 3.0 kg
- power supply: 24 VDC, 30W

Please note that some features listed above are optional even if not specifically mentioned. Technical modifications are possible without prior notice.



The Mandonic auto enveloping system adjusts the envelope limits perfectly according to the current variation of the process. The result: reliable detection of process errors with virtually no unnecessary machine stops. SKPuzzlemaster is provided for quick activation of additional expert monitoring routines.



Our unique Mandon®-system "talks" to the machine operator. Mandon® is constantly thinking along with the process, gives timely warnings, provides intelligent remedies, and gives precise recommendations on how to improve productivity and quality. Mandon® is your productivity insurance!



Easy-to-set part counters are available for controlling

- order size
- tool life
- unattended productions runs
- batching unit
- SPC inspection intervals
- number of sorted parts

All counters show preset quantity and current count. Machine stops when preset counts are reached (if activated).